



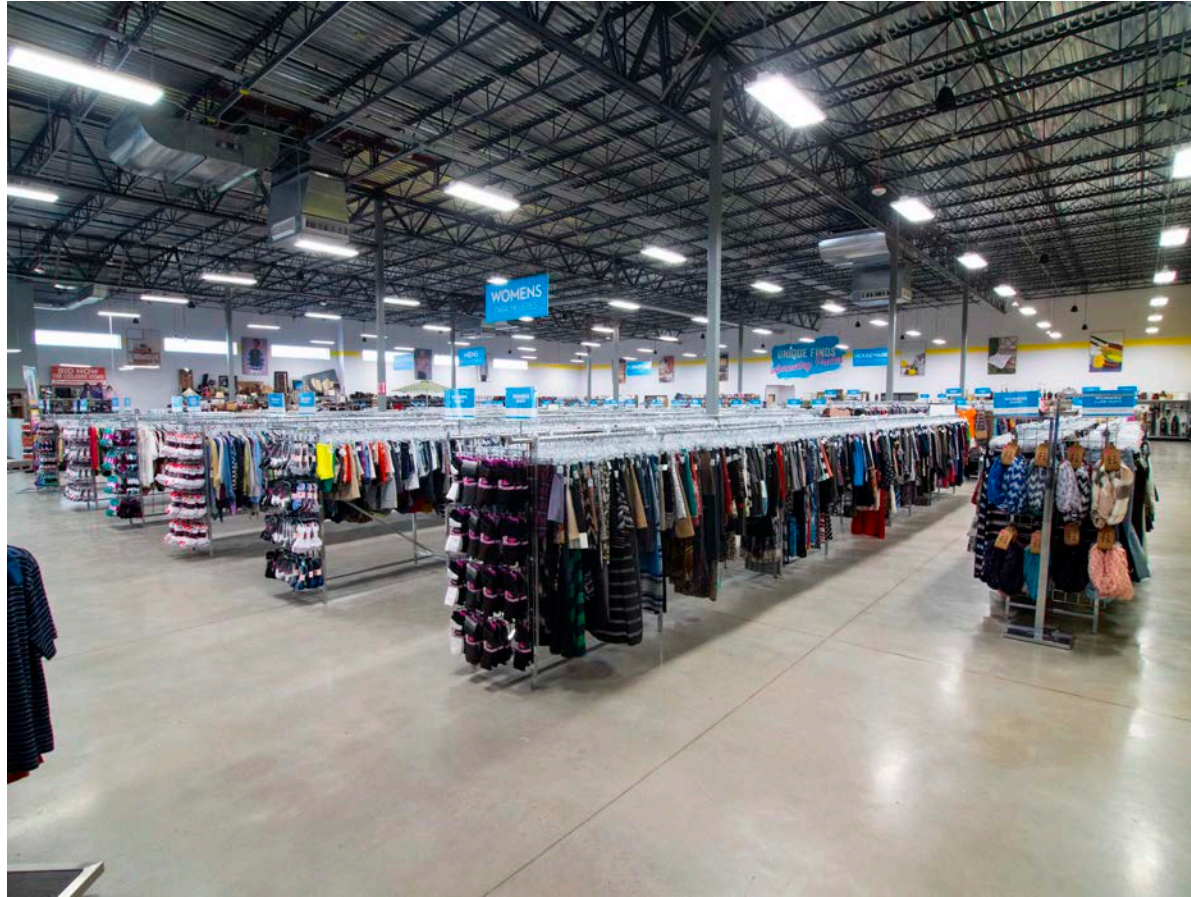
Goodwill Central Texas

Talent of Tomorrow

Presenter: Jennifer Tucker

September 17, 2020

What Comes to Mind



TRANSFORMING GENERATIONS

— *by empowering people* —

THROUGH EDUCATION, CAREER TRAINING, AND WORK

WORK AND EDUCATION ARE
THE **ONLY** PATHWAYS OUT
OF POVERTY

Google IT Support Professional Certificate

What to expect after enrolling:

- Instruction and training to gain the IT skills needed to succeed in a highly competitive workforce.
- A dynamic mix of video lectures, hands-on labs and support from Goodwill
- Introduction to troubleshooting, customer service, networking, operating systems, systems administration, automation and security
- Job placement and career advancement services provided by Goodwill

IMAGINE A FUTURE STATE....

What is My Next Step?

To find out if you qualify for the Google IT Support Professional Certificate program, please contact:

Intake@goodwillcentraltexas.org

512.637.7580

To explore partnership opportunities for education, training, and job placement services, please contact:

Jennifer.Tucker@goodwillcentraltexas.org

Vice President, Workforce Advancement

